

FOUNDATION / BASEMENT PLAN

PROJECT BY :



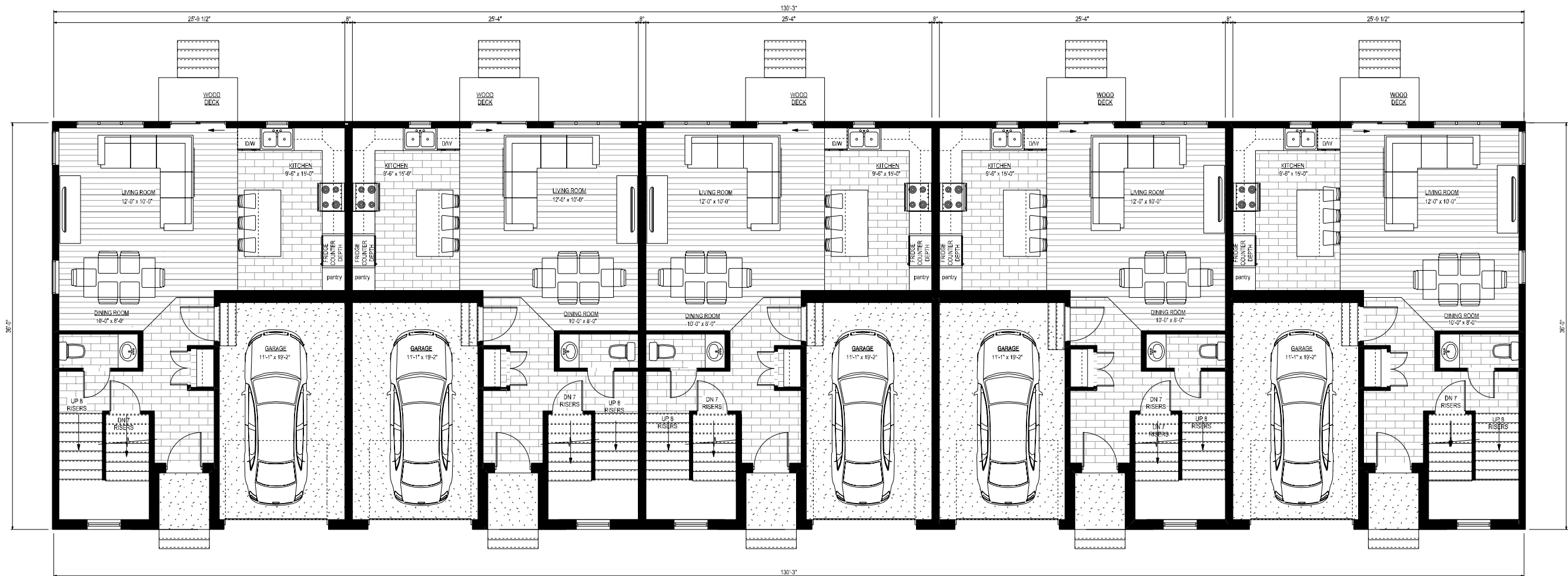
DESIGN & CONSTRUCTION PLANS BY :



LAKA
DESIGN & DRAFTING

PROPOSED TOWNHOUSE 5 UNITS - TH-1 & TH-3 & TH-7 & TH-8 -
FOR TMJ CONSTRUCTION INC.
-OASIS LIMOGES DEVELOPMENT -

NOTE:
RENDERINGS ARE ARTISTIC CONCEPT ONLY, & COULD DIFFER FROM
ACTUAL FINISH PRODUCT.
OPTIONS & UPGRADES AS PER BUILDER SPECS AT TIME OF
PURCHASE OF UNIT.
THE RENDERINGS & DESIGN CONCEPT ARE THE SOLE PROPERTY OF
TMJ CONSTRUCTION INC. & LAKA DESIGN & DRAFTING INC. AND
SHALL NOT BE REPRODUCED WITHOUT THE WRITTEN APPROVAL
FROM TMJ CONSTRUCTION INC. & LAKA DESIGN & DRAFTING INC.



UNIT A:
 MAIN FLOOR = 676 sq.ft.
 SECOND FLOOR = 903 sq.ft.
 TOTAL LIVING AREA = 1579 sq.ft.
 GARAGE AREA = 228 sq.ft.

UNIT B:
 MAIN FLOOR = 671 sq.ft.
 SECOND FLOOR = 889 sq.ft.
 TOTAL LIVING AREA = 1570 sq.ft.
 GARAGE AREA = 228 sq.ft.

UNIT C:
 MAIN FLOOR = 671 sq.ft.
 SECOND FLOOR = 899 sq.ft.
 TOTAL LIVING AREA = 1570 sq.ft.
 GARAGE AREA = 228 sq.ft.

UNIT D:
 MAIN FLOOR = 676 sq.ft.
 SECOND FLOOR = 903 sq.ft.
 TOTAL LIVING AREA = 1579 sq.ft.
 GARAGE AREA = 228 sq.ft.

UNIT E:
 MAIN FLOOR = 676 sq.ft.
 SECOND FLOOR = 903 sq.ft.
 TOTAL LIVING AREA = 1579 sq.ft.
 GARAGE AREA = 228 sq.ft.

MAIN FLOOR PLAN

PROJECT BY:



DESIGN & CONSTRUCTION PLANS BY:



LAKA
 DESIGN & DRAFTING

PROPOSED TOWNHOUSE 5 UNITS - TH-1 & TH-3 & TH-7 & TH-8 -
 FOR TMJ CONSTRUCTION INC.
 -OASIS LIMOGES DEVELOPMENT -

NOTE:
 RENDERINGS ARE ARTISTIC CONCEPT ONLY, & COULD DIFFER FROM ACTUAL FINISH PRODUCT. OPTIONS & UPGRADES AS PER BUILDER SPECS AT TIME OF PURCHASE OF UNIT. THE RENDERINGS & DESIGN CONCEPT ARE THE SOLE PROPERTY OF TMJ CONSTRUCTION INC. & LAKA DESIGN & DRAFTING INC. AND SHALL NOT BE REPRODUCED WITHOUT THE WRITTEN APPROVAL FROM TMJ CONSTRUCTION INC. & LAKA DESIGN & DRAFTING INC.



UNIT A:
 MAIN FLOOR = 676 sq. ft.
 SECOND FLOOR = 903 sq. ft.
 TOTAL LIVING AREA = 1579 sq. ft.
 GARAGE AREA = 228 sq. ft.

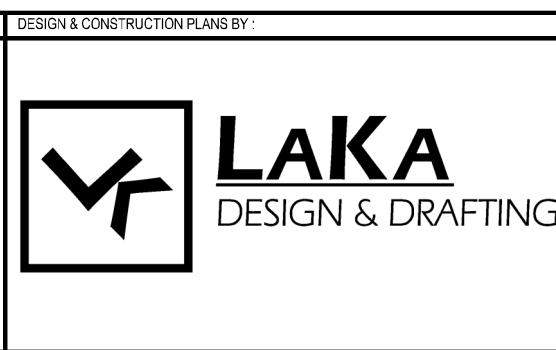
UNIT B:
 MAIN FLOOR = 671 sq. ft.
 SECOND FLOOR = 899 sq. ft.
 TOTAL LIVING AREA = 1570 sq. ft.
 GARAGE AREA = 228 sq. ft.

UNIT C:
 MAIN FLOOR = 671 sq. ft.
 SECOND FLOOR = 899 sq. ft.
 TOTAL LIVING AREA = 1570 sq. ft.
 GARAGE AREA = 228 sq. ft.

UNIT D:
 MAIN FLOOR = 676 sq. ft.
 SECOND FLOOR = 903 sq. ft.
 TOTAL LIVING AREA = 1579 sq. ft.
 GARAGE AREA = 228 sq. ft.

UNIT E:
 MAIN FLOOR = 676 sq. ft.
 SECOND FLOOR = 903 sq. ft.
 TOTAL LIVING AREA = 1579 sq. ft.
 GARAGE AREA = 228 sq. ft.

SECOND FLOOR PLAN



**PROPOSED TOWNHOUSE 5 UNITS - TH-1 & TH-3 & TH-7 & TH-8 -
 FOR TMJ CONSTRUCTION INC.
 -OASIS LIMOGES DEVELOPMENT -**

NOTE:
 RENDERINGS ARE ARTISTIC CONCEPT ONLY, & COULD DIFFER FROM ACTUAL FINISH PRODUCT.
 OPTIONS & UPGRADES AS PER BUILDER SPECS AT TIME OF PURCHASE OF UNIT.
 THE RENDERINGS & DESIGN CONCEPT ARE THE SOLE PROPERTY OF TMJ CONSTRUCTION INC. & LAKA DESIGN & DRAFTING INC. AND SHALL NOT BE REPRODUCED WITHOUT THE WRITTEN APPROVAL FROM TMJ CONSTRUCTION INC. & LAKA DESIGN & DRAFTING INC.